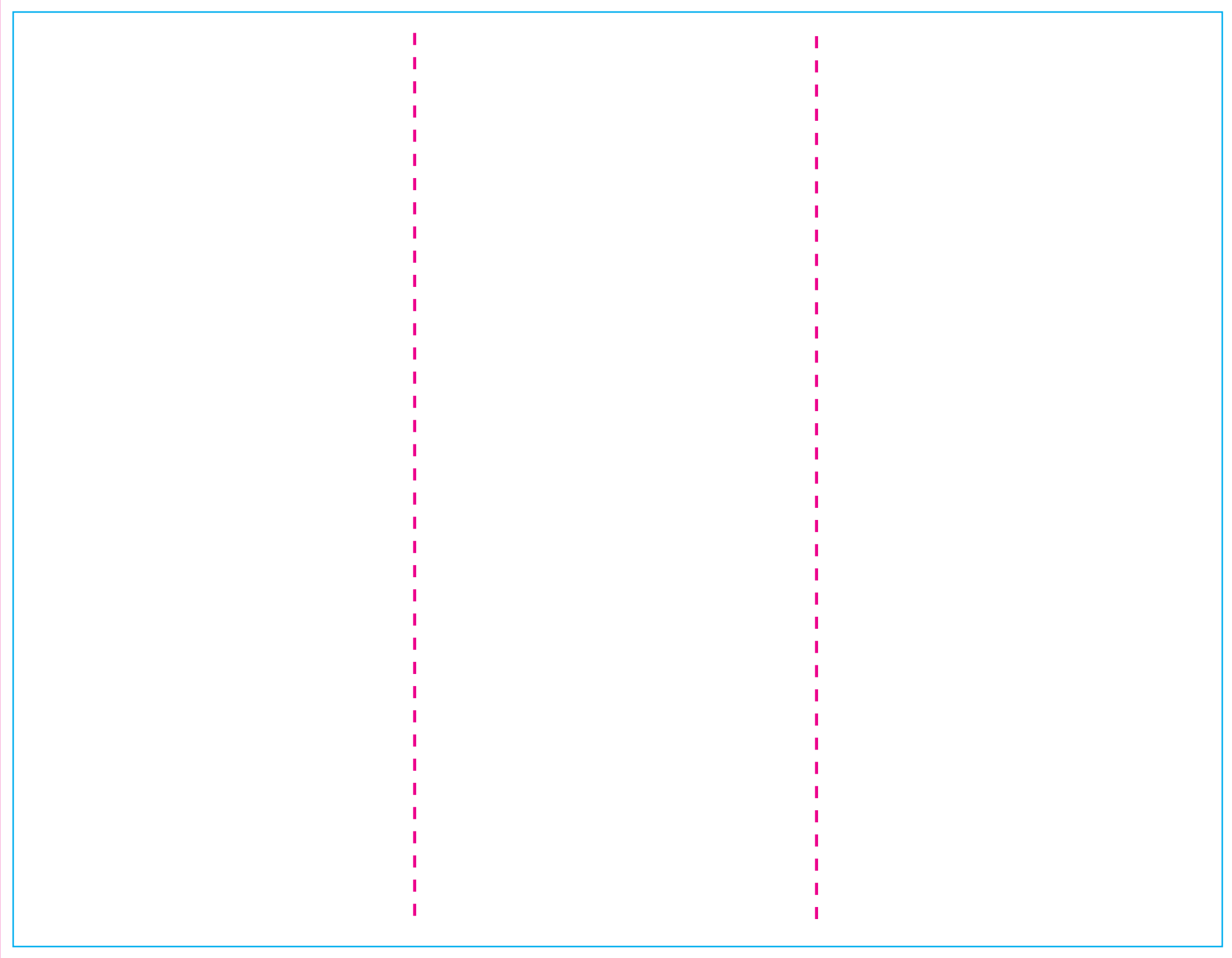


$3 \frac{21}{32}$   
(3.656)       $3 \frac{21}{32}$   
(3.656)       $3 \frac{21}{32}$   
(3.656)

**inside back panel**      **center panel**      **outside front panel**



— Trim  
— 1/8" Bleed

fold/  
score



premiergraphics.biz  
(360) 733-1212

fold/  
score

3 21/32  
(3.656)

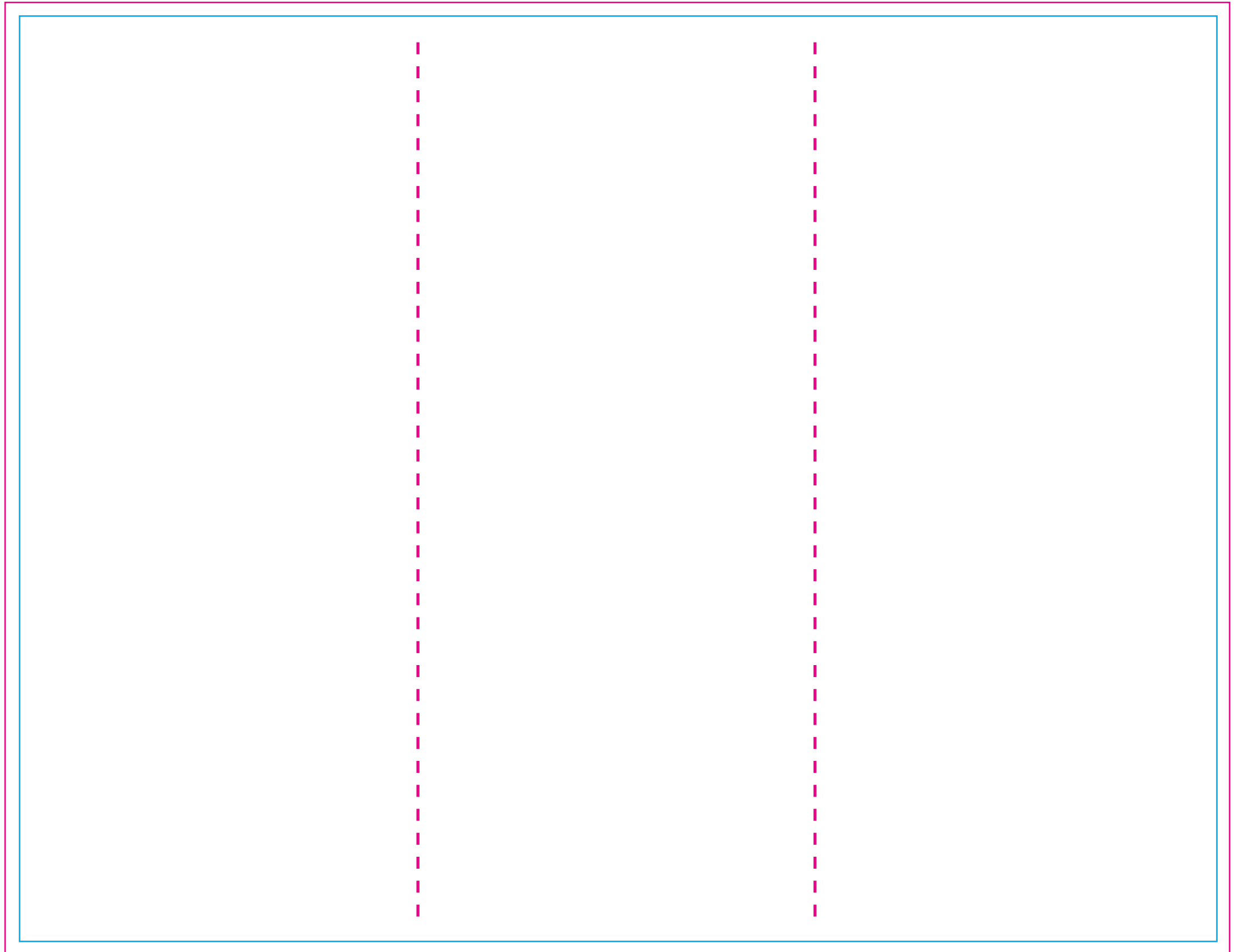
3 21/32  
(3.656)

3 21/32  
(3.656)

**inside front panel**

**center panel**

**outside back panel**



— Trim  
 — 1/8" Bleed

fold/  
score



premiergraphics.biz  
 (360) 733-1212

fold/  
score